

Montage COLLECTION

with

Eclipse TECHNOLOGY



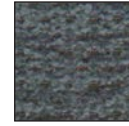
UC546-M
shown in Cornstalk



Cornstalk



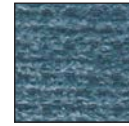
Bamboo*



Cobblestone



Eucalyptus*



Rainstorm



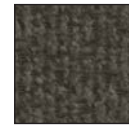
Morning Glory*



Orchard



Rhubarb*



Rustic



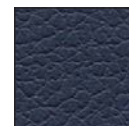
Silt



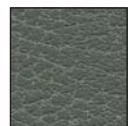
Coffee Bean*



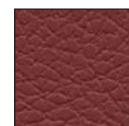
Mahogany



Night Navy*



Iron*



Hollyhock*



Buckskin*



Cream*



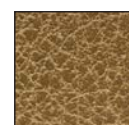
Shiitake*



Bridle*



Black Onyx*



Saddle*



UC546-JPT
shown in Rainstorm



UC546-L
shown in Cobblestone



Elevate your comfort level with the UC546. This standard three-position recliner has an additional motor that provides our patented Eclipse Technology, a tilting motion that cradles your body creating a weightless experience. Both motors, along with three sizing options, are sure to provide a personalized comfort experience.

UltraComfort
AMERICA
Comfort That's Patented™

PROUDLY MADE

BY AMERICANS
with Domestic & Imported Materials

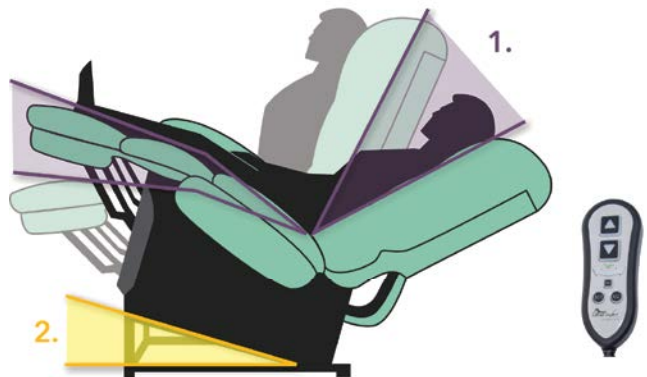
 pocketed
coil springs
standard

*Additional upcharge

Montage UC546

Model Number	UC546-JPT	UC546-M	UC546-L
Size	Petite	Medium	Large
Weight Capacity	300 LB	375 LB	375 LB
Recline Positions	3 position Eclipse	3 position Eclipse	3 position Eclipse
Chaise Seat	Yes	Yes	Yes
Pocketed Coil Seating System	Yes	Yes	Yes
Back Type	Seam	Seam	Seam
Head Rest Cover	Yes	Yes	Yes
Arm Covers	Yes	Yes	Yes
Battery Back Up	Yes	Yes	Yes
Overall Width	33"	33"	33.5"
Overall Height	40"	43.5"	47"
Width Between Arms	21"	21"	23"
Floor to Top of Seat	19.5"	21"	21.5"
Seat Depth	18.5"	19.5"	21"
Seat to Top of Back	26"	28"	30"
Seat to Top of Arm	6"	6"	8"
Seat Angle Raised	15°	15°	15°
Distance Required from Wall Reclined	17"	19"	20"
Extension Reclined from Back of Seat to End of Foot Rest	42"	43"	44.5"
Life Time Warranty, Chair Frame, Lift Frame, Recline Frame, Recline Mechanism	Yes	Yes	Yes
Warranty on Electrical parts	3 YR	3 YR	3 YR
Pro Rated Years 4 Thru 7	Yes	Yes	Yes
Warranty on Mechanical Labor	3 YR	3 YR	3 YR
Warranty on Electrical Labor	1 YR	1 YR	1 YR
Warranty on Fabric and Foam, and Pocketed Coils	1 YR	1 YR	1 YR
Removable Back Option	No	No	No
Left Hand Control Option Available	Yes	Yes	Yes
Extra Pocket Option Available	Yes	Yes	Yes
4-Motor Heat & Massage Available	No	No	No
2-Motor Heat & Massage Available	No	No	No
Foot Rest Extension Option Available	No	Yes	Yes
Smart Tek System	Yes	Yes	Yes

* See Customize Chart for dimension limits
 Sizes may vary depending on fabric, filling material, upholstery and carpet thickness.
 All measurements taken on concrete floor using levels and metal rulers.



Motor #1 – Controls the movement of the backrest & footrest

Motor #2 – Activates Eclipse Technology, a tilting movement that provides a weightless experience.

WHAT IS ECLIPSE TECHNOLOGY?

The Patent Pending Eclipse Technology includes an extra motor that provides a tilting motion, cradling your body and offering more positioning than any other recliner on the market.



Literature is current at time of printing. UltraComfort reserves the right to make changes to the product or literature at any time.



Complies with
 UL 73 and
 CSA C22.2 No. 68



Comfort That's Patented™

UltraComfort
 Phone: 866-793-5100
 Fax: 866-255-9962
 web: www.ultracomfort.net