

Tranquility COLLECTION



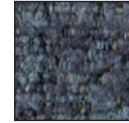
shown in
Antique



Anchor



Bamboo*



Oxford



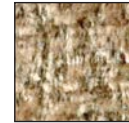
Rhubarb*



Antique



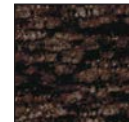
Morning
Glory*



Sandstorm



Eucalyptus*



Bittersweet



Silt



Mahogany

Experience a new twist on an existing model. This lift recliner now comes standard with an articulating headrest and adjustable lumbar all operated by a single hand control. In addition to the lumbar, the articulating headrest has been adjusted to move the entire top of the recliner providing support not only to your head but to your shoulders as well.

UC486

UltraComfort[™]
AMERICA
Positioning you for life.

PROUDLY MADE

BY AMERICANS
with Domestic & Imported Materials

*Additional upcharge

Tranquility COLLECTION

UC486

Model Number	UC486
Size	Medium
Weight Capacity	375 LB
Recline Positions	3
Chaise Seat	Yes
Pocketed Coil Seat	Yes
Back Type	Seam
Head Rest Cover	No
Arm Covers	No
Battery Back Up	Yes
Overall Width	37"
Overall Height	45.5"
Overall Depth	41"
Width Between Arms	21"
Floor to Top of Seat	20.5"
Seat Depth	21.5"
Seat to Top of Back	30"
Seat to Top of Arm	5"
Seat Angle Raised	15°
Distance Required from Wall Reclined	18.5"
Extension Reclined from Back of Seat to End of Foot Rest	42"
Life Time Warranty, Chair Frame, Lift Frame, Recline Frame, Recline Mechanism	Yes
Warranty on Electrical parts	3 YR
Pro Rated Years 4 Thru 7	Yes
Warranty on Mechanical Labor	3 YR
Warranty on Electrical Labor	1 YR
Warranty on Fabric and Foam, and Pocketed Coils	1 YR
Removable Back Option	Yes
Straight Lift Option Available	Yes
Left Hand Control Option Available	Yes
Extra Pocket Option Available	Standard
4-Motor Heat & Massage Available	No
2-Motor Heat & Massage Available	No
AutoFlex Available	No
Foot Rest Extension Option Available	No
Smart Tek System	Yes
Articulating Headrest	Standard
Adjustable Lumbar	Standard

* See Customize Chart for dimension limits
 Sizes may vary depending on fabric, filling material, upholstery and carpet thickness.
 All measurements taken on concrete floor using levels and metal rulers.



Power your posture with adjustable headrest and lumbar support. Both features are standard on the UC486.

User-friendly feature of every UltraComfort lift and recline chair:



Easy to use battery backup system. Each UltraComfort lift and recliner has a battery backup system in the electrical transformer which operates on two 9 volt batteries. In the event of a power failure, the battery system will raise the chair from the reclined to the seated position. The batteries should be replaced after one use.

UltraComfort™
 AMERICA

Positioning you for life.

UltraComfort
 Phone: 866-793-5100
 Fax: 866-255-9962
 web: www.ultracomfort.net



Literature is current at time of printing. UltraComfort reserves the right to make changes to the product or literature at any time.



Complies with
 UL 73 and
 CSA C22.2 No. 68